

Creating a Cross-Sector Care Provider Network to Advance Transgender Health

Transgender Health Care Advisory Board



Plenary Panelists

Jennifer A. Vencill, PhD

Assistant Professor, Licensed Psychologist
Mayo Clinic

Abel Knochel, PhD

Assistant Professor
University of Minnesota Duluth - Social Work

G. Nic Rider, PhD

Assistant Professor, Program in Human Sexuality
University of Minnesota Medical School

Katie Spencer, PhD, LP

Adult Gender Services Coordinator,
Program in Human Sexuality
Co-Director, National Center for Gender Spectrum
Health
Department of Family Medicine and Community
Health
University of Minnesota Medical School

Deb Thorp, MD

Director, Park Nicollet Gender Services Clinic
Park Nicollet

Transgender Health Care Advisory Board

Jennifer A. Vencill

Abel Knochel

G. Nic Rider

Katie Spencer

Deb Thorp

Jenny Kluznik

Nathalie Crowley

Delaney Bryan

Amanda Meegan

Ajay Patel

Angela Goepford

Bryan Rolfes

Marilyn Fairchild

Jennifer Vencill

Kerry McDonald

Laurie Sieve

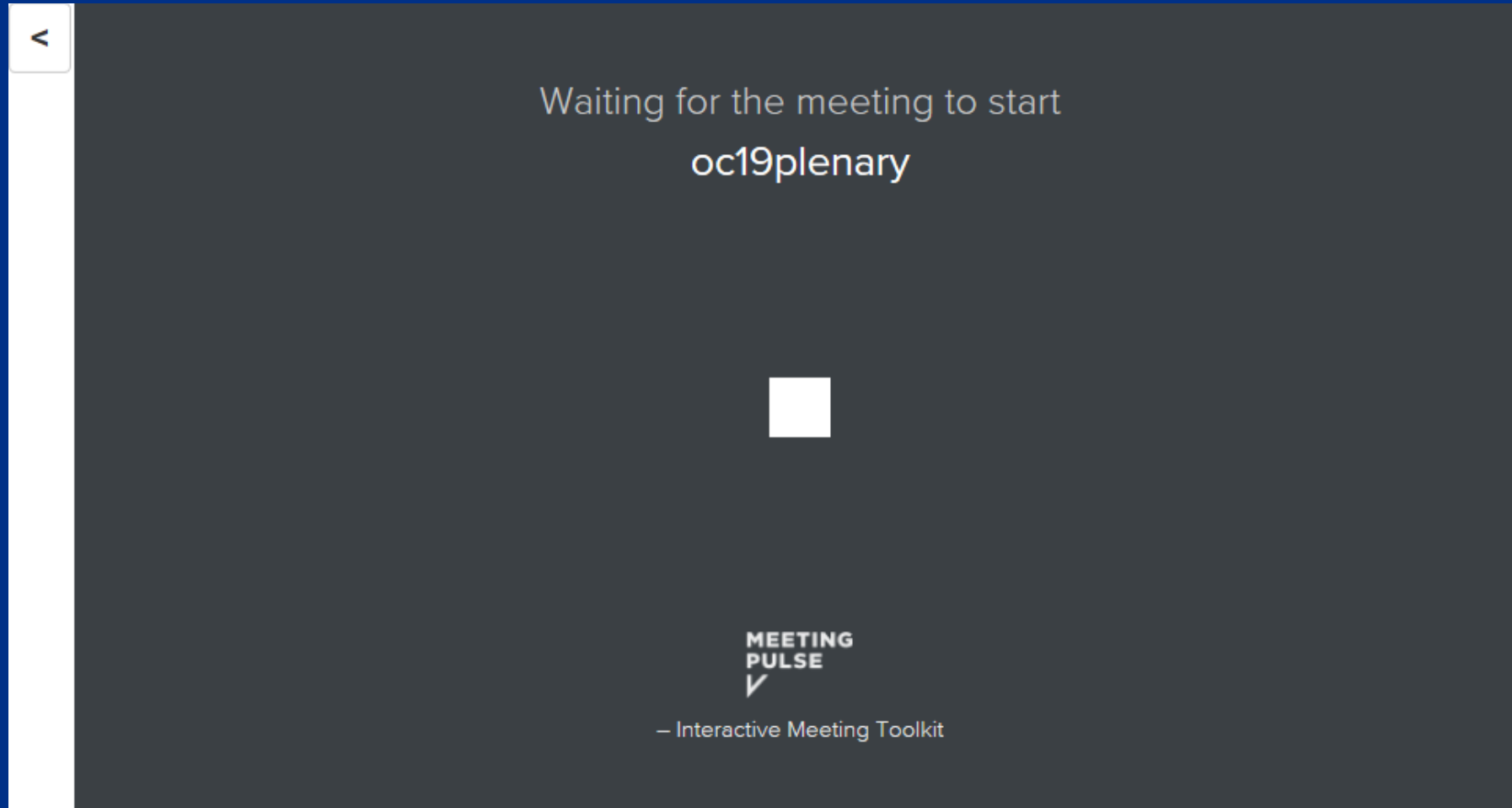
Joni Steffens

James Conniff

Tara Richter

Kimberly Scanlon

Who's in the room?

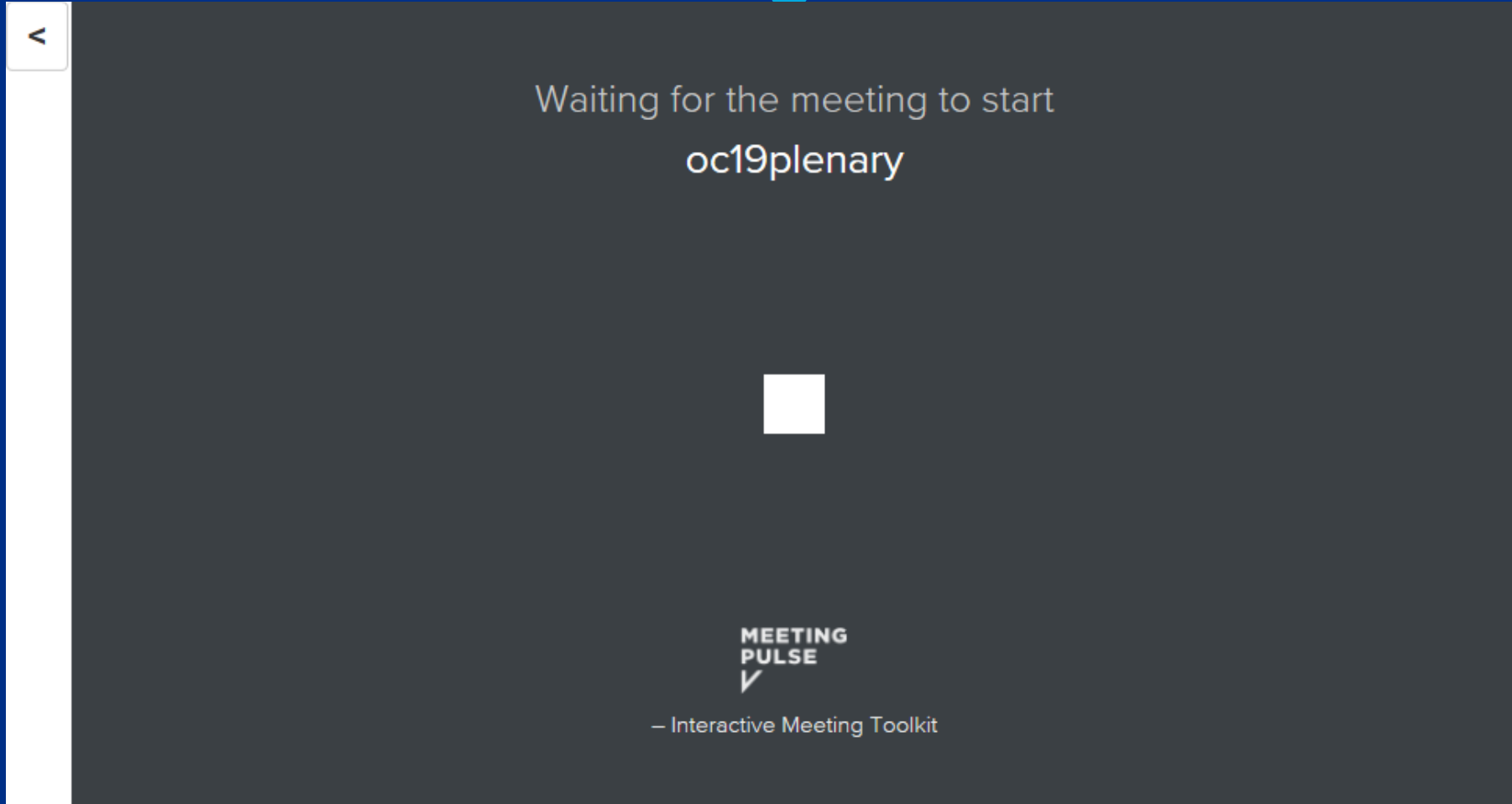


Looking back

How have providers and practitioners working with transgender people developed networks and connections in the past?

How has knowledge and practice of working with transgender people changed over time?

Looking back

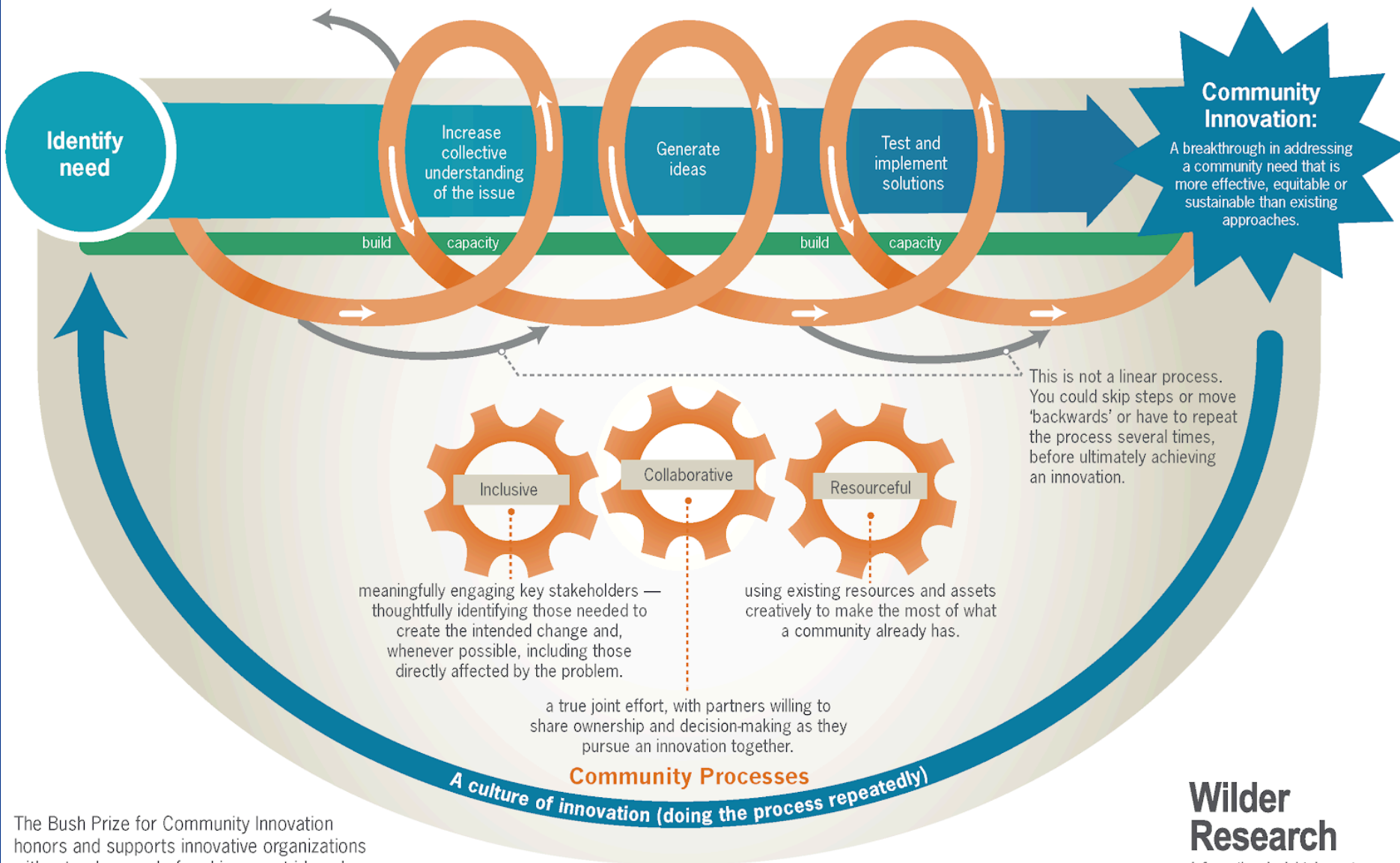


The Present

- 54% of transgender people have had to teach their provider how to care for them, resulting in inconsistent, poor quality health care
- Many health care providers find themselves unprepared to offer competent and appropriate care to trans people
- Providers learn these skills on their own, and often report feeling stretched thin, isolated, and even marginalized by their colleagues

The Present

- The project got started halfway through the summer of 2018
- We convened a group of key stakeholders, providers and practitioners working on trans health (including some providers and practitioners who are trans themselves), to examine the issues, generate ideas, and now we are at the point of starting to test and implement solutions.



The Bush Prize for Community Innovation honors and supports innovative organizations with a track record of making great ideas happen.

Community Innovation Grants support communities to use problem-solving processes that lead to more effective, equitable and sustainable solutions.

Wilder Research

Information. Insight. Impact.

This theory of change was co-developed by Bush Foundation and Wilder Research.

The Future

- Discussions have centered around provider networking and connections, resources and information, and curriculum and education.
- Narrowed focus to resources and information and provider connections and networking -> statewide provider network focused on transgender and gender non-conforming health

Ideas

1. Robust, improved LGBTQ Provider Directory with the capacity to find providers based on expertise, location, and provider identity.
2. Building an interactive chatbot to answer both provider questions and LGBTQ individual's about LGBTQ health and wellness, with a specific eye on having extensive information about trans and gender non-conforming health.
3. Developing a monitored listserv for providers to ask questions and discuss with other practitioners across the state or region
4. Hosting regular online and/or in-person meetings for providers and practitioners

Discussion



Waiting for the meeting to start
oc19plenary



MEETING
PULSE
✓

– Interactive Meeting Toolkit

Table Discussion

- How do you connect with other providers now?
- How would you like to connect to other providers in the future?
- Would you be willing to use a listserv?
 - Why or why not?
 - What features do you need to feel comfortable using it?

Thank You!

Please join us at the Provider Reception this afternoon from 4:30 – 6:00pm to hear more about the project !